

User Manual

APM32F103VB MINI BOARD

Version: V1.0.0

1. Performance

- 32-bit ARM® Cortex®-M3
- Max frequency: 96MHz
- Flash: 128KB
- SRAM: 20KB
- Support FPU

2. Interface and Resources

- USB: 1 (Type B)
- KEY: 2
- LED: 3
- RESET KEY: 1
- JTAG/SWD interface: 1
- GPIO: 81
- USART: 1 (Switch to USART1 or USART2 by jumper)

3. Start

- 1) Ensure a solid connection for jumper J6, J7, J8, J9 and J10.
- 2) Connect the USB in development board with PC by a USB Type B cable and power the development board.
- 3) Connect the emulator with JTAG interface for MCU programming and debugging.

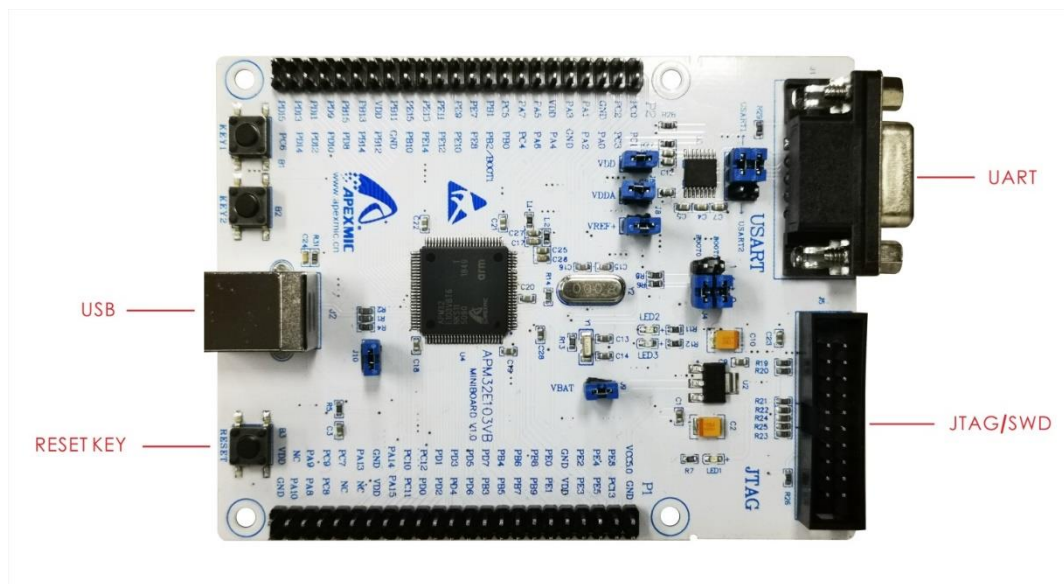
4. System Requirements

- Windows OS (7/8/10)
- USB Type A to Type B

5. Development Tool

- Keil: MDK-ARM

6. Appearance



7. Schematic Diagram

Refer to 《APM32F103VB MINIBOARD V1.0.0 PDF》